

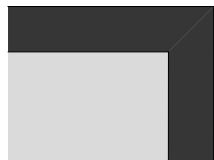
DRAWING INDEX

DWG	NAME	Rev.	SCALE
01	COVER SHEET	01	
02	SITE LOCATION PLAN	01	
03	SITE PLAN	01	1:500
04	OPERATION PLAN	01	1:500
05	FLOOR PLAN	01	1:500
06	OFFICE FLOOR PLAN	01	1:100
07	ELEVATIONS 01	01	1:250
08	SECTIONS 01	01	1:250
09	PERSPECTIVE 01	01	

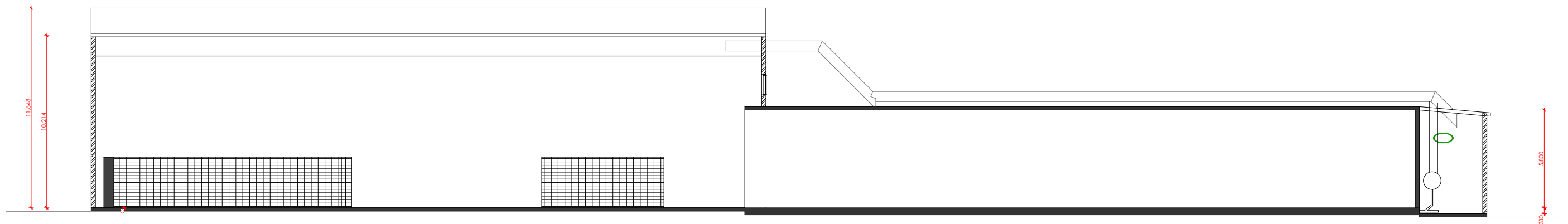
DA
STOTTS CREEK
ORGANICS PROCESSING FACILITY
TWEED VALLEY, NSW
SOILCO, NOVEMBER 2019

				<div><div><div>---</div><div>EXISTING WALLS/ROOF</div></div><div><div></div><div>EXISTING WALLS</div></div><div><div></div><div>NEW WALLS</div></div><div><div></div><div>EXHAUST FAN</div></div><div><div>×</div><div>DGPO AT NOMINATED HEIGHT</div></div></div> <div><div><div>⌘</div><div>PENDANT LIGHT-LONG CORD</div></div><div><div>⊗</div><div>DOWN LIGHT</div></div><div><div>↻</div><div>SWITCH</div></div><div><div>↻</div><div>TWO WAY SWITCH</div></div><div><div>↻</div><div>DIMMER SWITCH</div></div></div> <div><div>FG</div><div>FIXED GLASS</div></div> <div><div>RC</div><div>REINFORCED CONCRETE</div></div> <div><div>S.A.</div><div>SMOKE ALARM AS3786</div></div> <div><div>TC</div><div>FIBRE CEMENT SHEET</div></div> <div><div>BS</div><div>BARESTONE SHEET</div></div> <div><div>CM</div><div>CORRUGATED METAL</div></div> <div><div>VB</div><div>VILBOARD</div></div> <div><div>PB</div><div>PLASTERBOARD</div></div> <div><div>HWD</div><div>HARDWOOD</div></div> <div><div>TC</div><div>TIMBER CLADDING</div></div> <div><div>LV</div><div>LOUVRES</div></div> <div><div>DP</div><div>DOWNPIPE</div></div> <div><div>ALL INFORMATION CONTAINED ON THIS DRAWING IS COPYRIGHT, NO PART OF THE DRAWING MAY BE COPIED OR REPRODUCED WITHOUT THE WRITTEN CONSENT OF THE AUTHOR. DO NOT SCALE DIRECTLY FROM THIS DRAWING. CHECK ALL MEASUREMENTS ON SITE.</div></div> <div><div>The Author accepts no liability for any loss or damage arising from authorised or unauthorised use of any information on this drawing.</div></div> <div><div>Contact: shuart mason designs 0415 474 519</div></div> <div><div>stumason@iuh.com.au</div></div> <div><div>NORTH POINT</div><div></div></div> <div><div>COVER SHEET</div><div><div>Project</div><div>STOTTS CREEK OPF</div></div><div><div>For:</div><div>SOILCO</div></div><div><div>Address</div><div>BARTLETTS RD. STOTTS CREEK TWEED VALLEY NSW</div></div></div> <div><table><tr><td colspan="2">Issue Name</td><td>Issue ID</td><td rowspan="4">Dwg [Rev.]</td></tr><tr><td colspan="2">DA</td><td>01</td></tr><tr><td>Date</td><td colspan="2">#IssueDate</td></tr><tr><td>Job no.</td><td>File name</td><td></td></tr><tr><td>1809</td><td colspan="2">SOILCO TWEED DA.ph</td><td></td></tr><tr><td>Scale</td><td colspan="2"></td><td></td></tr><tr><td>@A3</td><td colspan="2"></td><td></td></tr></table></div>	Issue Name		Issue ID	Dwg [Rev.]	DA		01	Date	#IssueDate		Job no.	File name		1809	SOILCO TWEED DA.ph			Scale				@A3			
Issue Name		Issue ID	Dwg [Rev.]																										
DA		01																											
Date	#IssueDate																												
Job no.	File name																												
1809	SOILCO TWEED DA.ph																												
Scale																													
@A3																													
DA	Issue Name	Revision ID	Change Name	06/11/19	Issue Date																								

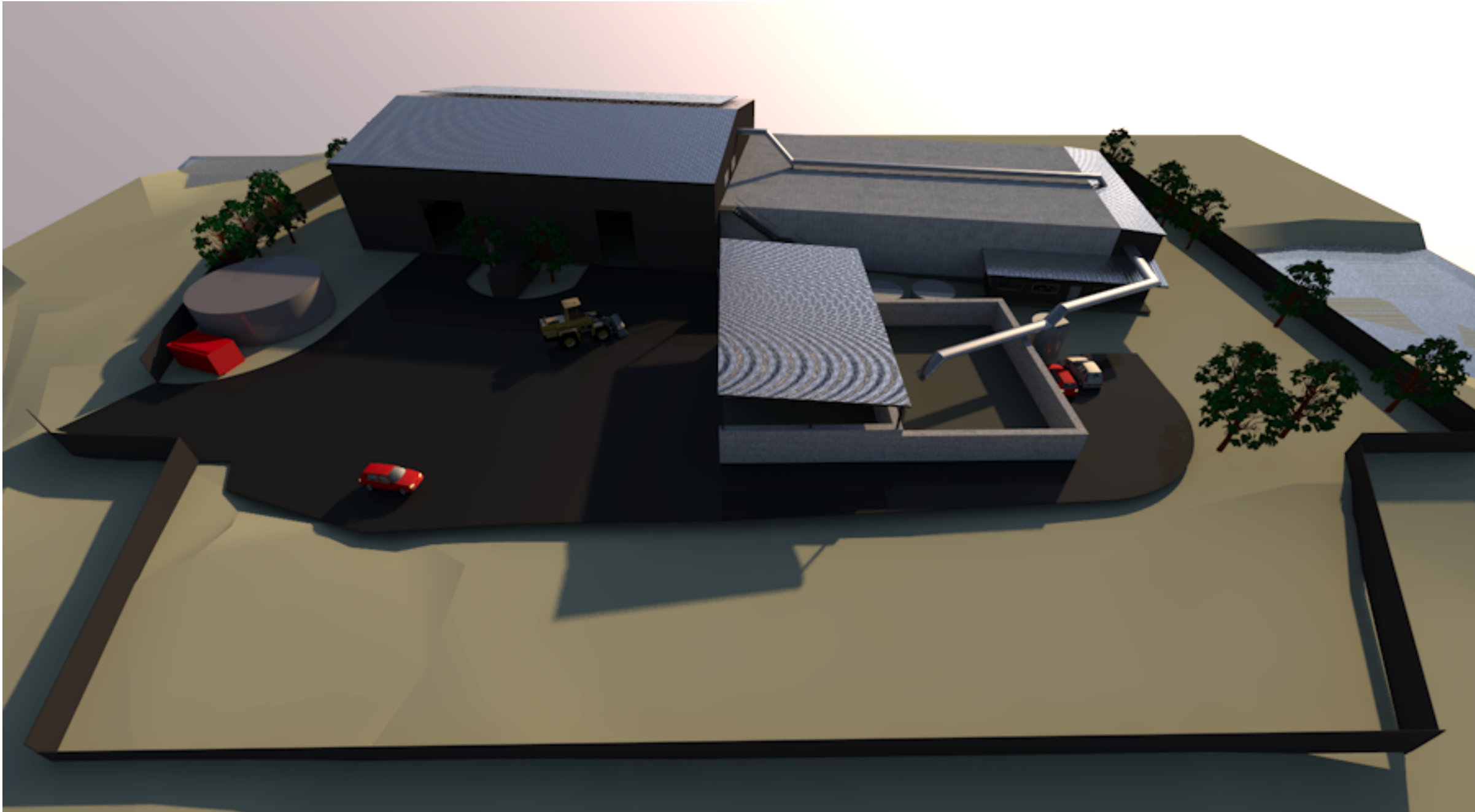
[illegible]




06
[01]



				<div><div><div>---</div><div>EXISTING WALLS/ROOF</div></div><div><div></div><div>EXISTING WALLS</div></div><div><div></div><div>NEW WALLS</div></div><div><div></div><div>EXHAUST FAN</div></div><div><div>×</div><div>DGPO AT NOMINATED HEIGHT</div></div></div> <div><div><div>⌵</div><div>PENDANT LIGHT-LONG CORD</div></div><div><div>⊗</div><div>DOWN LIGHT</div></div><div><div>↻</div><div>SWITCH</div></div><div><div>↻</div><div>TWO WAY SWITCH</div></div><div><div>↻</div><div>DIMMER SWITCH</div></div></div> <div><div>FG</div><div>FIXED GLASS</div></div> <div><div>RC</div><div>REINFORCED CONCRETE</div></div> <div><div>S.A.</div><div>SMOKE ALARM AS3786</div></div> <div><div>TC</div><div>FIBRE CEMENT SHEET</div></div> <div><div>BS</div><div>BARESTONE SHEET</div></div> <div><div>CM</div><div>CORRUGATED METAL</div></div> <div><div>VB</div><div>VILLABOARD</div></div> <div><div>PB</div><div>PLASTERBOARD</div></div> <div><div>HWD</div><div>HARDWOOD</div></div> <div><div>TC</div><div>TIMBER CLADDING</div></div> <div><div>LV</div><div>LOUVRES</div></div> <div><div>DP</div><div>DOWNPIPE</div></div> <div><div colspan="2">ALL INFORMATION CONTAINED ON THIS DRAWING IS COPYRIGHT, NO PART OF THE DRAWING MAY BE COPIED OR REPRODUCED WITHOUT THE WRITTEN CONSENT OF THE AUTHOR. DO NOT SCALE DIRECTLY FROM THIS DRAWING. CHECK ALL MEASUREMENTS ON SITE.</div><div>The Author accepts no liability for any loss or damage arising from authorised or unauthorised use of any information on this drawing.</div><div>Contact: shuart mason designs 0415 474 519 stumason@ihug.com.au</div></div> <div><div>NORTH POINT</div><div></div></div> <div><div>SECTIONS 01</div><div>Project STOTTS CREEK OFF</div><div>For: SOILCO</div><div>Address BARTLETTS RD, STOTTS CREEK TWEED VALLEY NSW</div></div> <div><table><tr><td>Issue Name DA</td><td>Issue ID 01</td></tr><tr><td>Date #IssueDate</td><td>Job no. 1809</td></tr><tr><td>File name SOILCO TWEED DA.ph</td><td>Scale 1:250 @A3</td></tr></table></div> <div><div>Dwg [Rev.]</div><div>08 [01]</div></div>	Issue Name DA	Issue ID 01	Date #IssueDate	Job no. 1809	File name SOILCO TWEED DA.ph	Scale 1:250 @A3
Issue Name DA	Issue ID 01									
Date #IssueDate	Job no. 1809									
File name SOILCO TWEED DA.ph	Scale 1:250 @A3									
DA				06/11/19						
Issue ID	Issue Name	Revision ID	Change Name	Issue Date						



						<p>— — — EXISTING WALLS/ROOF</p> <p>EXISTING WALLS</p> <p>NEW WALLS</p> <p>EXHAUST FAN</p> <p>DGPO AT NOMINATED HEIGHT</p>		<p>⌘ PENDANT LIGHT-LONG CORD</p> <p>⌘ DOWN LIGHT</p> <p>⌘ SWITCH</p> <p>⌘ TWO WAY SWITCH</p> <p>⌘ DIMMER SWITCH</p>		<p>FG FIXED GLASS</p> <p>RC REINFORCED CONCRETE</p> <p>SA SMOKE ALARM/ASS786</p> <p>FC FIBRE CEMENT SHEET</p> <p>BS BARESTONE SHEET</p> <p>CM CORRUGATED METAL</p> <p>VB VILLAGOARD</p> <p>PB PLASTERBOARD</p> <p>HW HWD HARDWOOD</p> <p>TC TIMBER CLADDING</p> <p>LV LOUVRES</p> <p>DP DOWNPIPE</p>		<p>ALL INFORMATION CONTAINED ON THIS DRAWING IS COPYRIGHT. NO PART OF THE DRAWING MAY BE COPIED OR REPRODUCED WITHOUT THE WRITTEN CONSENT OF THE AUTHOR. DO NOT SCALE DIRECTLY FROM THIS DRAWING. CHECK ALL MEASUREMENTS ON SITE.</p> <p>The Author accepts no liability for any loss or damage arising from authorised or unauthorised use of any information on this drawing.</p> <p>Contact: stuart mason designs 0414 475 519</p> <p>stumason@ihug.com.au</p>		<p>NORTH POINT</p> 		<p>PERSPECTIVE 01</p> <p>Project STOTTS CREEK OPF</p> <p>For: SOILCO</p> <p>Address BARTLETTS RD, STOTTS CREEK TWEED VALLEY NSW</p>		<p>Issue Name DA</p> <p>Date #IssueDate</p> <p>Job no. 1809</p> <p>File name SOILCO TWEED DA.pln</p> <p>Scale @A3</p>		<p>Dwg [Rev.]</p> <p>09 [01]</p>	
DA				06/11/19																	
Issue ID	Issue Name	Revision ID	Change Name	Issue Date																	